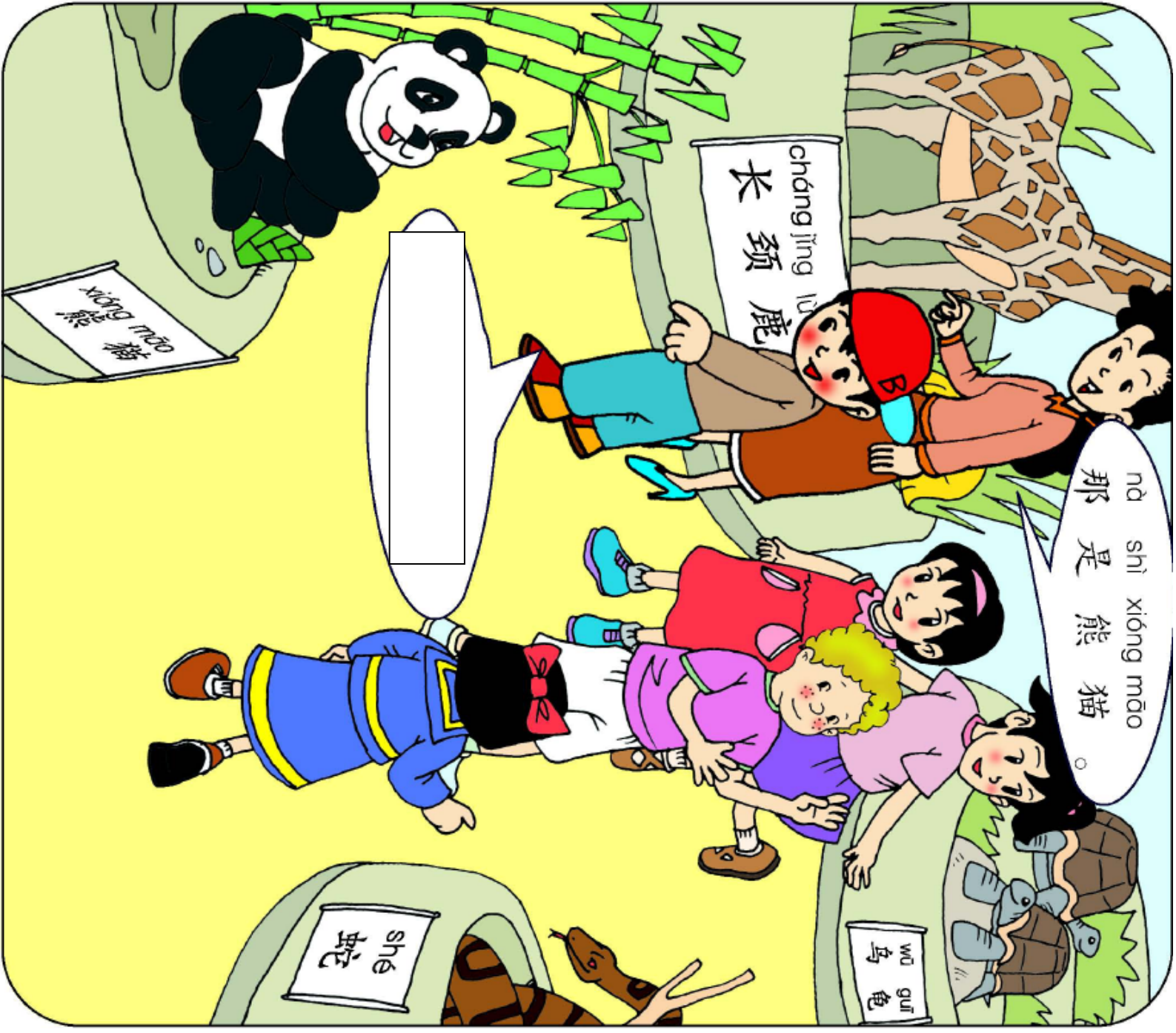


# 那是什么？

Nà shì shénme?  
¿Qué es eso?





# 那是熊猫

Nà shì xióngmāo

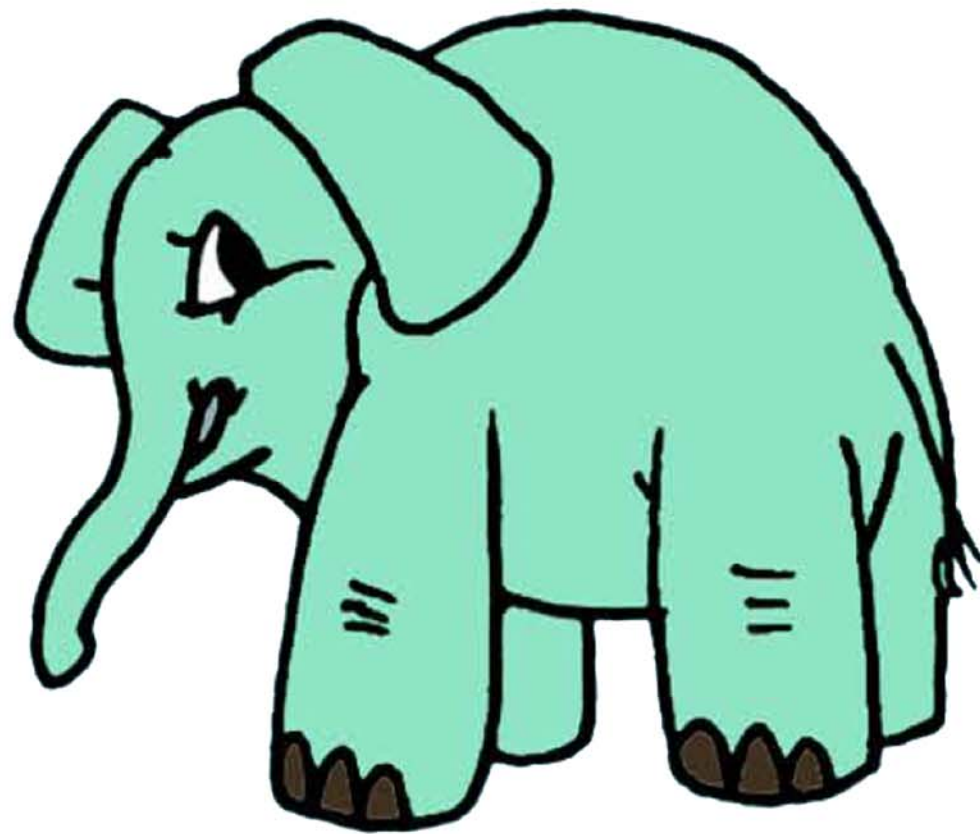
Eso es un  
panda





大象

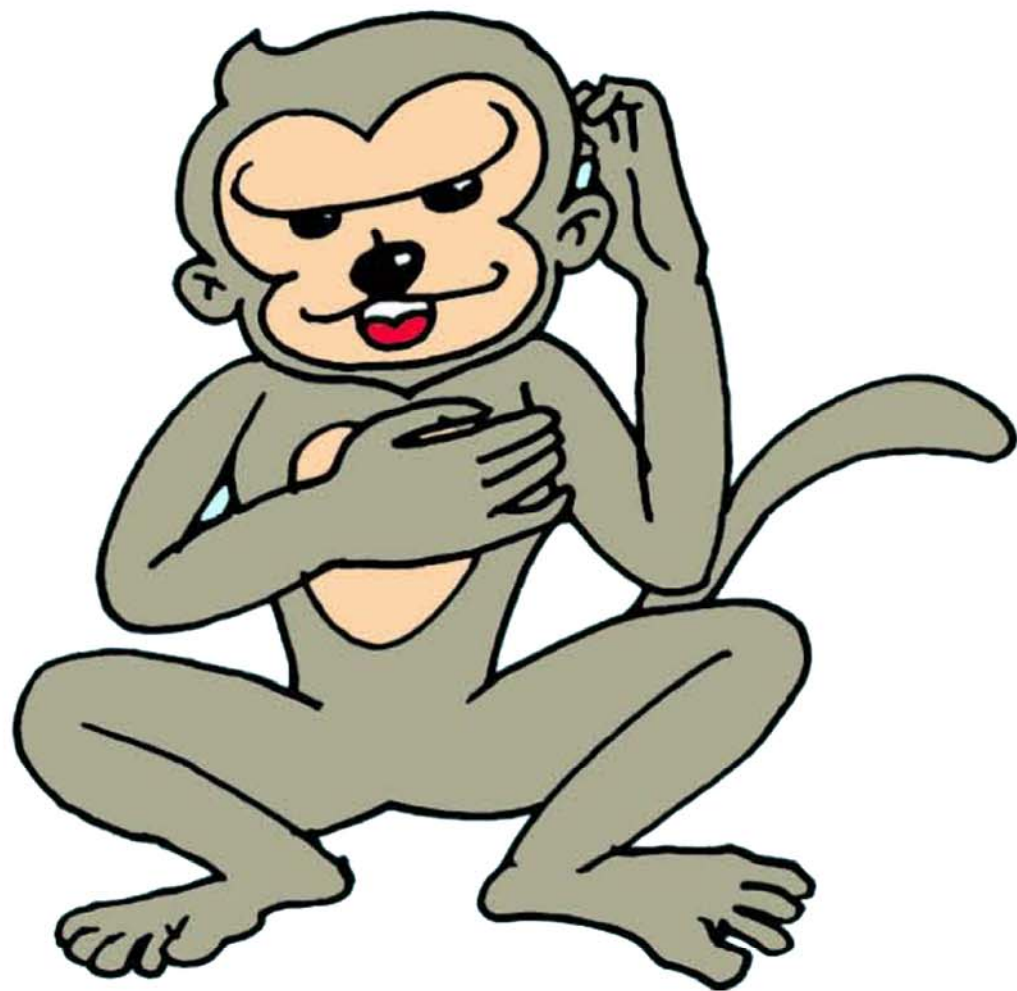
Dà xiàng  
Elefante





# 猴子

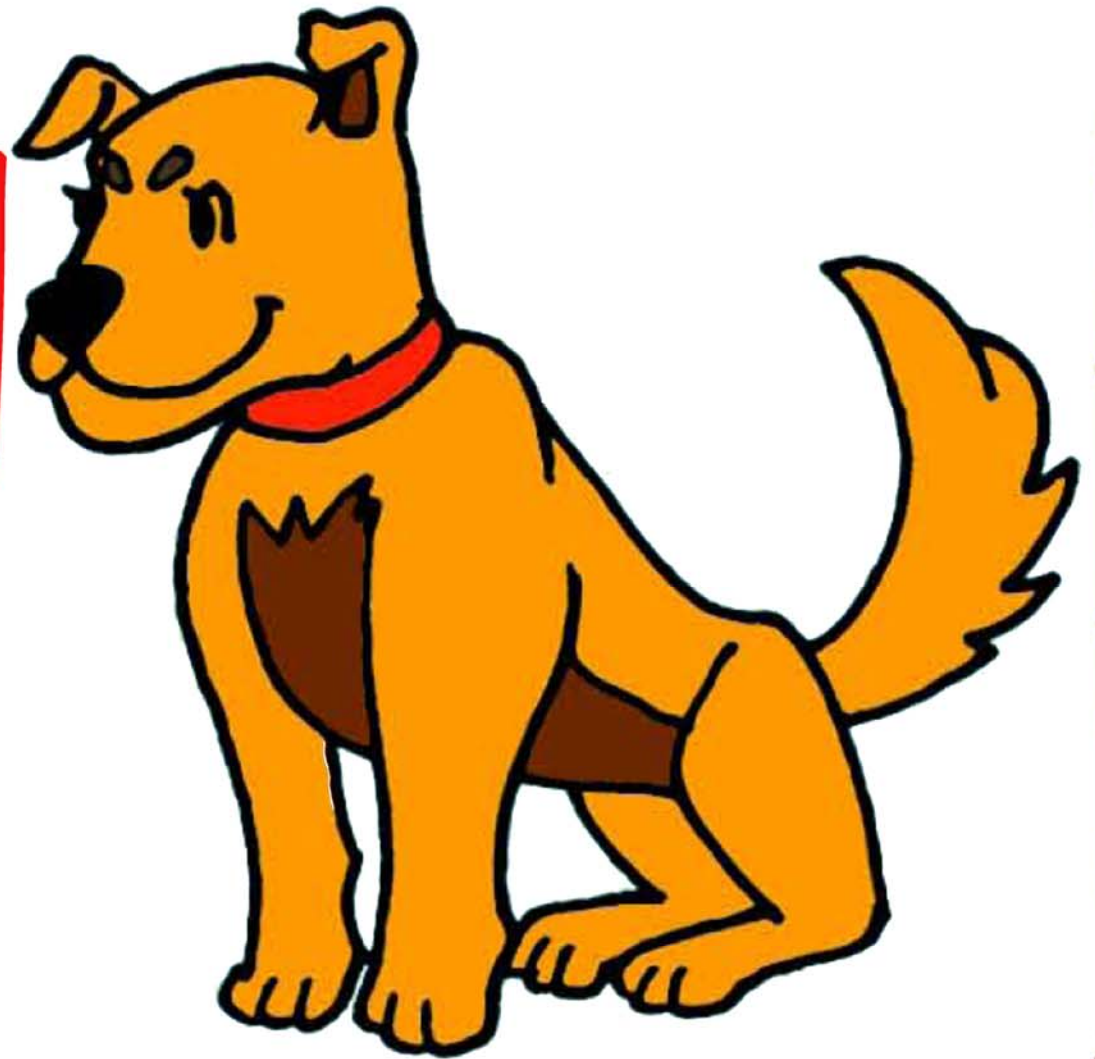
Hóuzi  
Mono

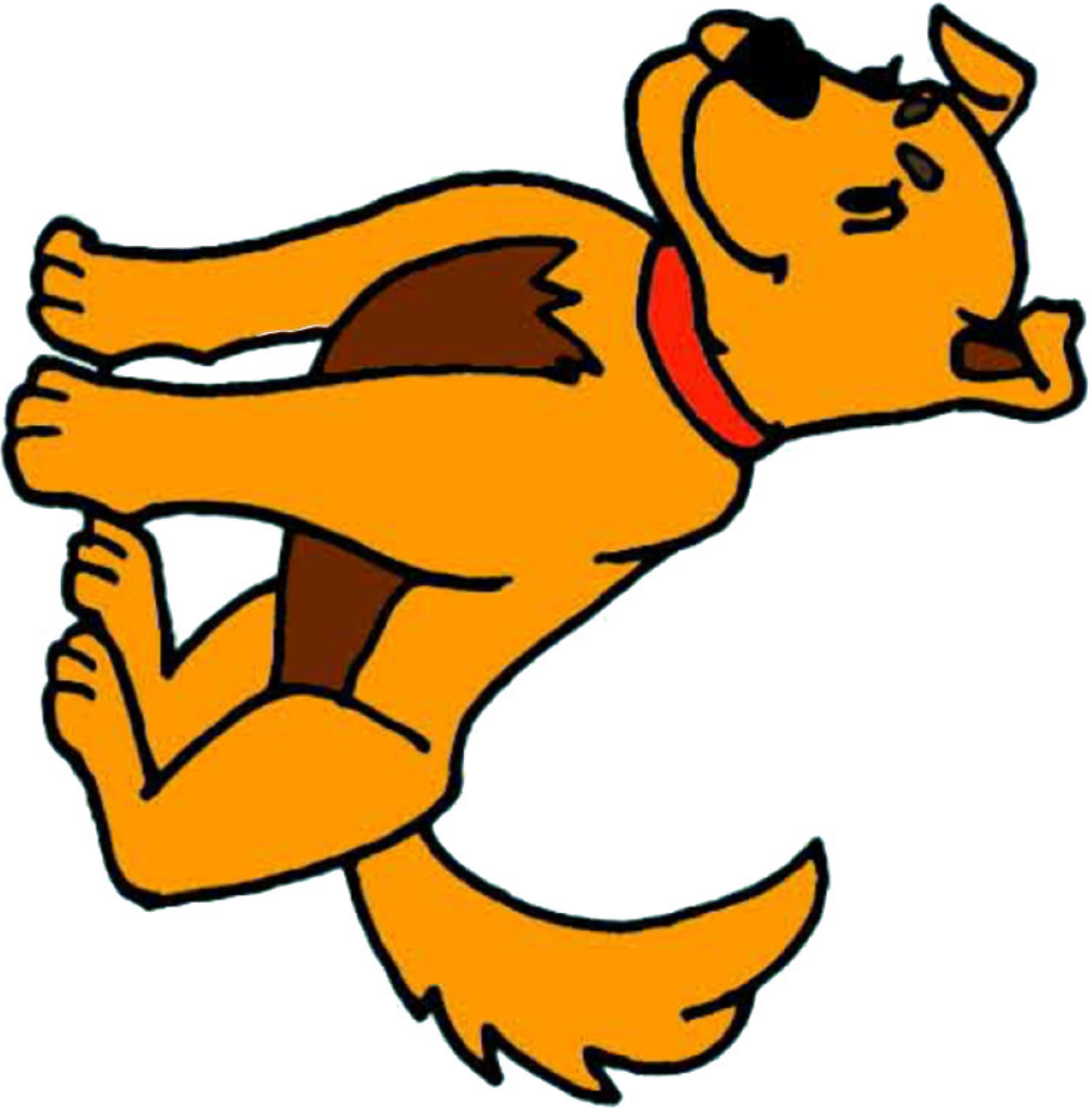




小狗

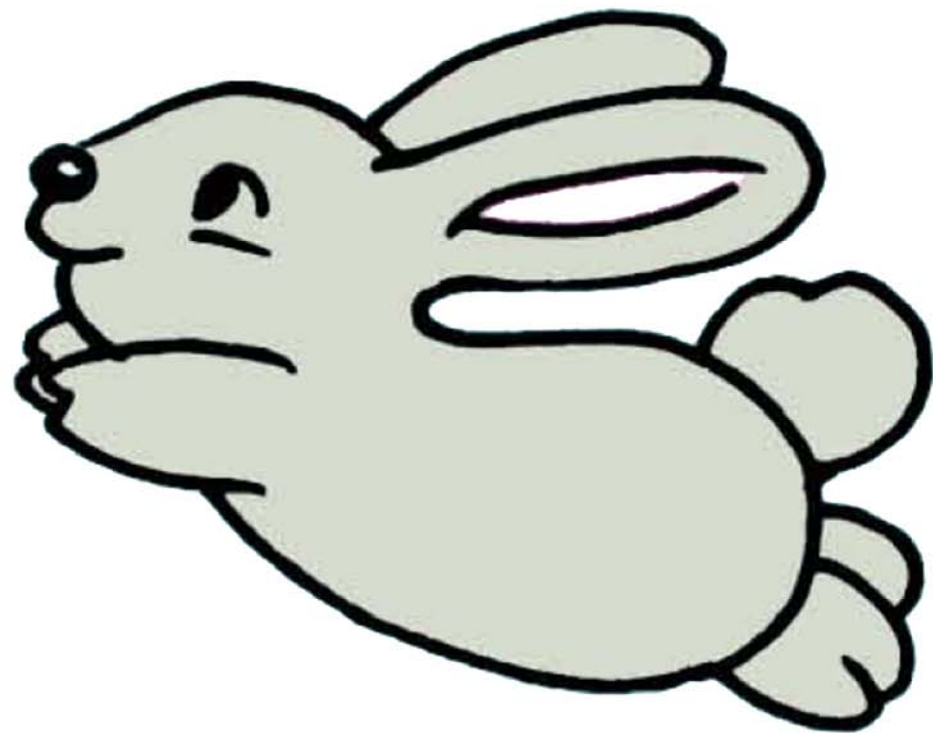
Xiǎo gǒu  
Cachorro

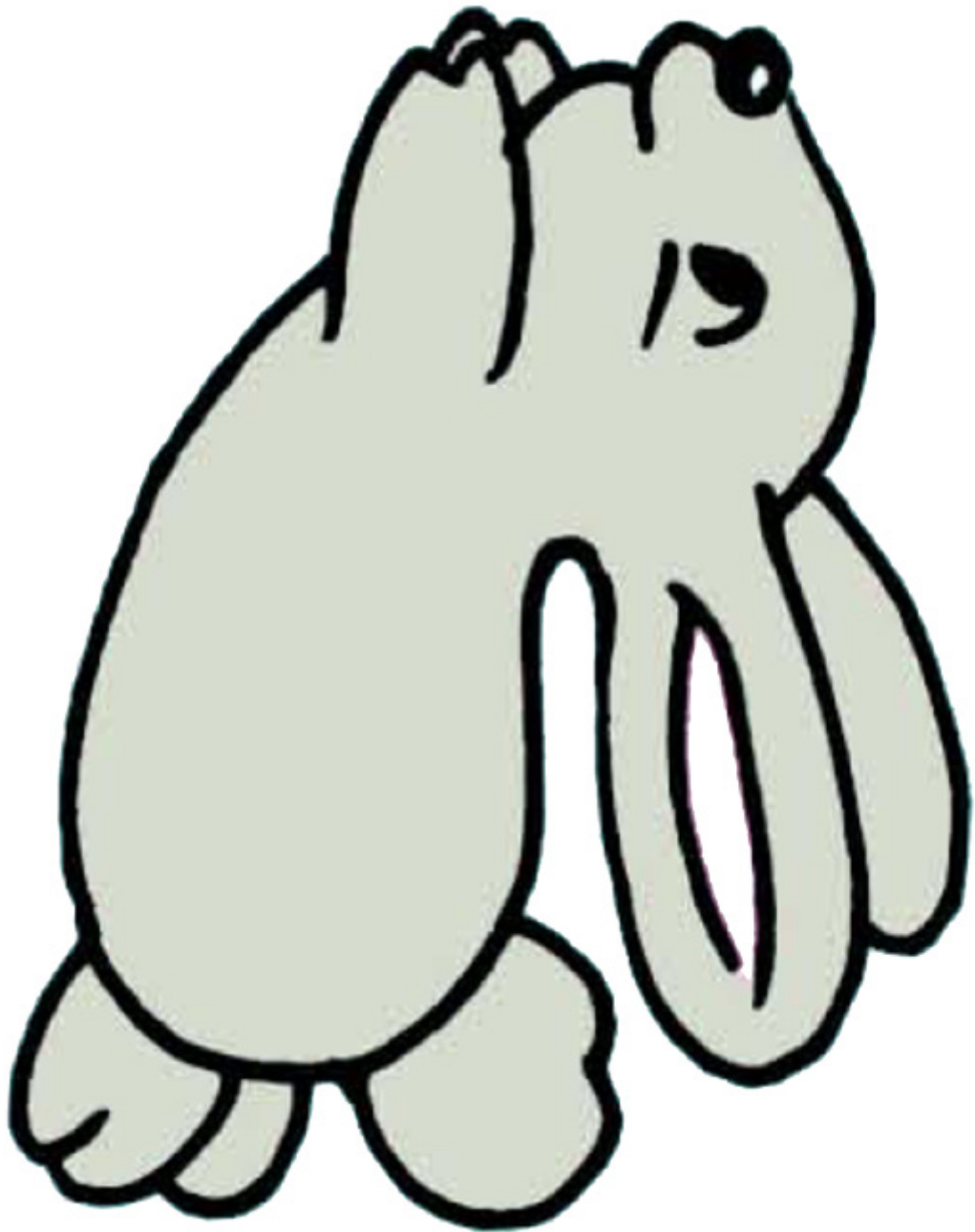




兔子

Tùzǐ  
Conejo





熊貓

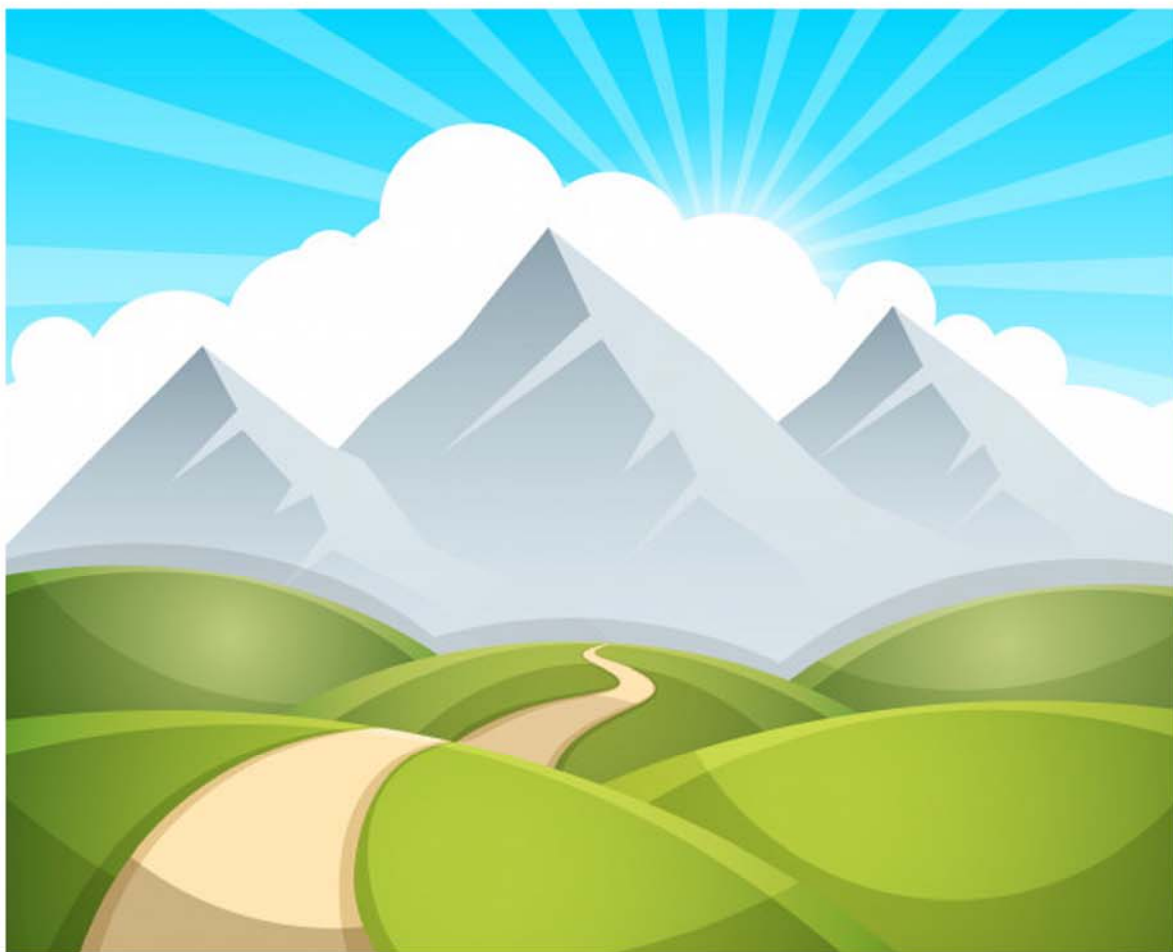
Xióngmāo  
Panda





山

Shān  
Montaña

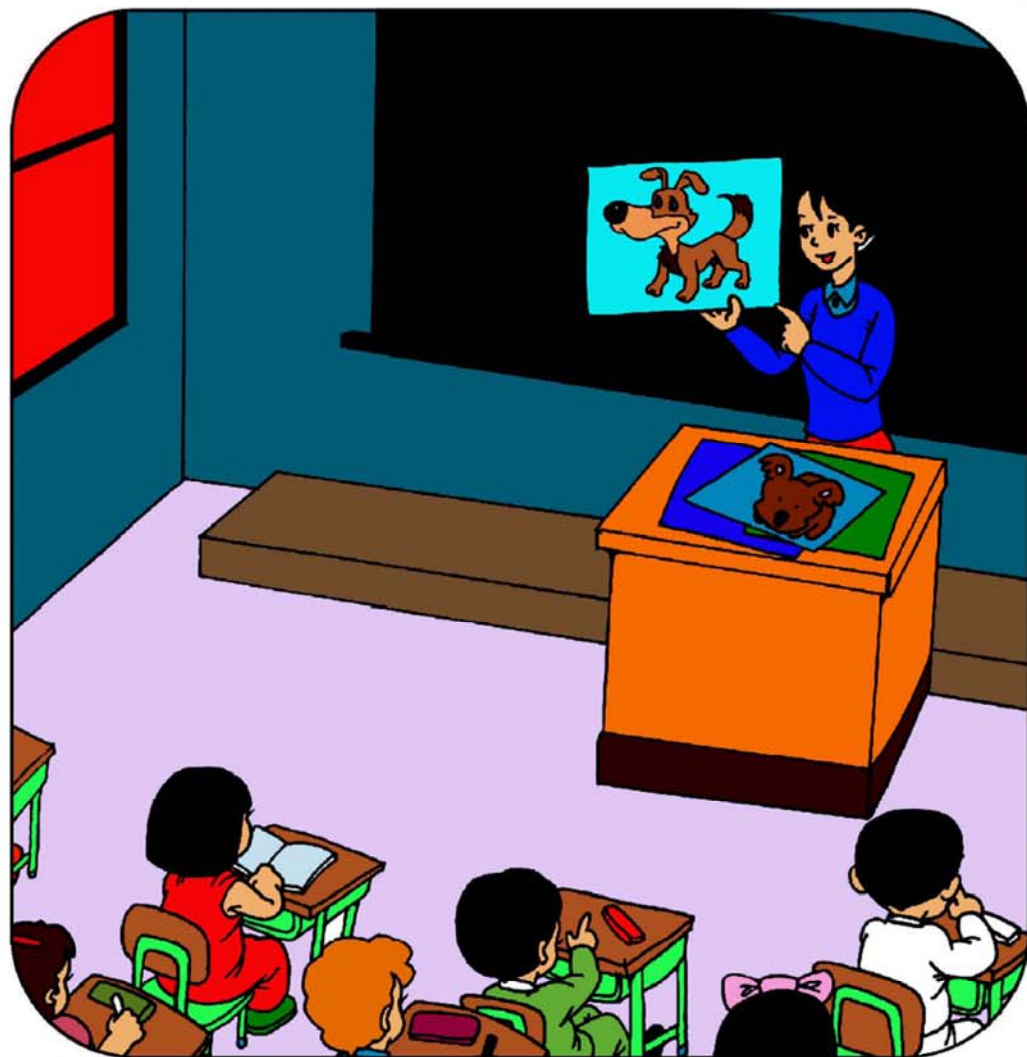




那是什么？

Nà shì shénme?

¿Qué es eso?





大熊貓



Dà xióngmāo  
Panda gigante

